



*Capital Cascades Trail:
Segment 3*

Project Highlights

- The Capital Cascades Trail: Segment 3 project is a continuation of the Capital Cascades Trail network, which will provide connectivity and improvements linking Leon High School in Downtown Tallahassee to Lake Henrietta.
- This project creates a linear park, alongside the newly constructed FAMU Way, stretching from Adams Street to the confluence with the Central Drainage Ditch east of Lake Bradford Road.
- The Project will transform an open stormwater ditch into a beautiful linear park and trail, with a number of park amenities.

Current Status:

- The City has awarded a construction contract for FAMU Way Phase 3 & the CCT Segment 3D-B Regional Stormwater Facility (RSF).
- Permitting for the RSF, St. Marks Trailhead, and community space is underway and once completed, construction will commence.

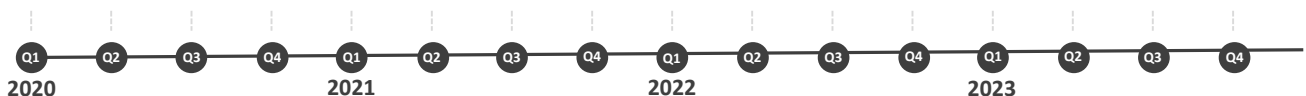
Design

Q1-Q3 2020



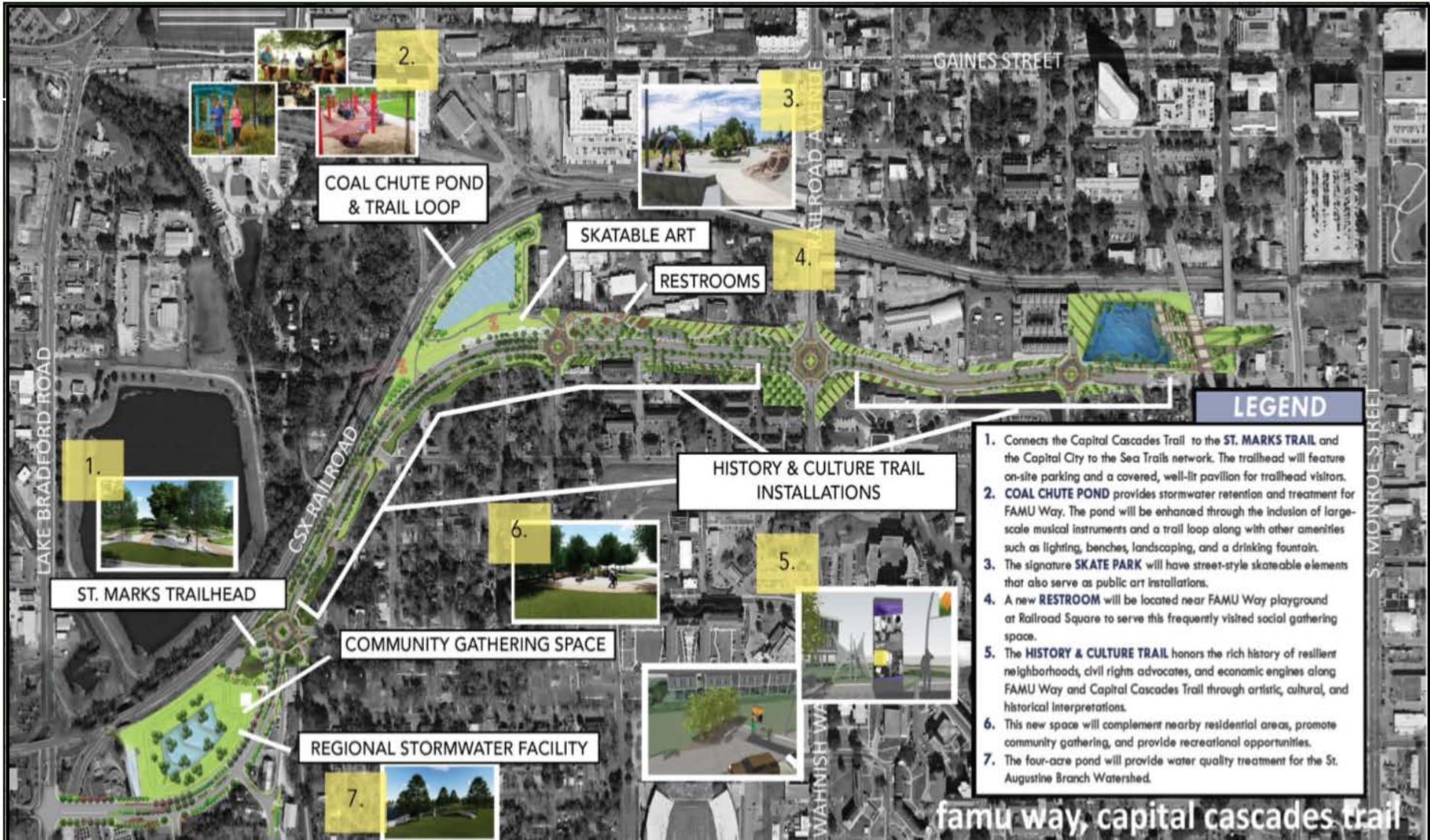
Construction

Q3 2020 – Q3 2021



BLUEPRINT

INTERGOVERNMENTAL AGENCY



LEGEND

1. Connects the Capital Cascades Trail to the ST. MARKS TRAIL and the Capital City to the Sea Trails network. The trailhead will feature on-site parking and a covered, well-lit pavilion for trailhead visitors.
2. COAL CHUTE POND provides stormwater retention and treatment for FAMU Way. The pond will be enhanced through the inclusion of large-scale musical instruments and a trail loop along with other amenities such as lighting, benches, landscaping, and a drinking fountain.
3. The signature SKATE PARK will have street-style skateable elements that also serve as public art installations.
4. A new RESTROOM will be located near FAMU Way playground at Railroad Square to serve this frequently visited social gathering space.
5. The HISTORY & CULTURE TRAIL honors the rich history of resilient neighborhoods, civil rights advocates, and economic engines along FAMU Way and Capital Cascades Trail through artistic, cultural, and historical interpretations.
6. This new space will complement nearby residential areas, promote community gathering, and provide recreational opportunities.
7. The four-acre pond will provide water quality treatment for the St. Augustine Branch Watershed.

famu way, capital cascades trail